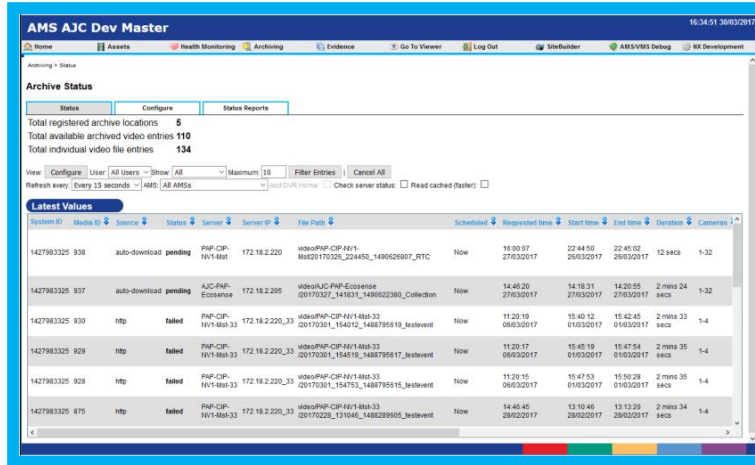


ARCHIVE MANAGEMENT SYSTEM VIDEO MANAGEMENT SOFTWARE



The screenshot shows the 'AMS AJC Dev Master' interface. At the top, there are navigation tabs: Home, Assets, Health Monitoring, Archiving, Evidence, Go To Viewer, Log Out, SiteBuilder, AMS/MS Delug, and RK Development. Below the navigation, there's a section for 'Archive Status' with sub-tabs for Status, Configure, and Status Reports. It displays summary statistics: 'Total registered archive locations: 5', 'Total available archived video entries: 110', and 'Total individual video file entries: 134'. There are also filters for 'View' (Configure, Live, All Users, Show, All) and 'Maximum' (10), along with a 'Filter Entries' button and a 'Cancel All' button. Below this is a 'Refresh every: Every 13 seconds' option and checkboxes for 'AMS', 'All AMSs', 'Add more items', 'Check sensor status', and 'Read cached (false)'. The main part of the interface is a table titled 'Latest Values' with columns: System ID, Media ID, Source, Status, Server, Server IP, File Path, Scheduled, Requested time, Start time, End time, Duration, and Camera. The table contains several rows of data, including entries for 'auto-download pending', 'Ntp failed', and 'RIP-CIP' with various system and media IDs, server information, file paths, and timestamps.

Archive Management System (AMS) is a professional video management and diagnostics system designed to organise and manage the video and associated data recorded by large scale, multi-location static and mobile vehicle CCTV solutions making it a highly cost-effective solution. AMS's powerful diagnostics tools enable predictive maintenance by reporting the health and operation of the system to authorised users via the ticketing and alert system resulting in reduced exposure to risk through an improved up-time of the system.

WHY NETVU?

- ✓ NetVu Connected™ streaming protocols ensure no loss of video evidence.
- ✓ Video Partition (PAR) File™ format for multi-camera synchronised playback and long storage media life.
- ✓ Closed IP™ hardened management layer provides the highest levels of cyber security.
- ✓ MultiMode™ recording reduces storage needs while maintaining very high recording quality.
- ✓ Simple data capture, recording and presentation from EPOS, Electronic Access Control and Building Management Systems, coherently displayed with video pictures.
- ✓ NetVu PowerScripts™ for quick and easy integration and customised applications.

KEY FEATURES

- Automatic indexing of video and meta data to a central database from all connected devices.
- Dynamic site tree for simple management of DVR and Video Server locations.
- Automatic and manual archive of video footage to any desired storage location.
- Import of video from NetVu Connected devices by a range of criteria including date/time, camera number and GPS.
- Health monitoring of all connected devices.
- Management of software updates across a network of NetVu Connected devices.
- SiteBuilder module to create project for NetVu Pick-a-Point software.
- Cloud-based or NetVu supplied physical hardware configurations.

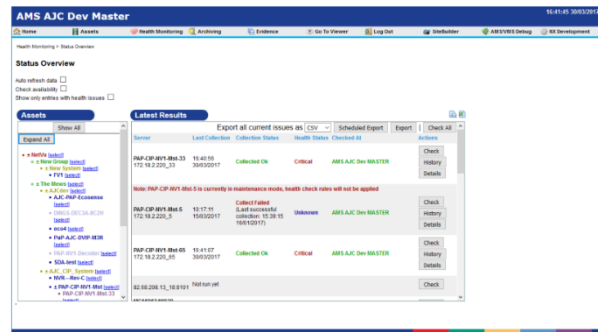
Minimum System Specification

Operating System	Microsoft Windows 7 to Windows 10.
Processor	Intel i3 Dual Core.
Memory	4GB RAM.
Graphics Capability	OpenGL 2.0 Compatible Graphics Card.

Recommended System Specification & Warranty

Operating System	Microsoft Windows 7 to Windows 10.
Processor	Intel i5 or i7 Quad Core.
Memory	4GB RAM.
Graphics Capability	Integrated GPU or OpenGL 2.0 Compatible Graphics Card.
Warranty	1 year

SCREENSHOTS



NUMBERS

Part Number	Description
AMS/SD	Systems Database for AMS
AMS/VA	Video Archiving Module for AMS
AMS/EM	Evidence Management Module for AMS
CAM1000	1,000 Camera License
CAM10000	10,000 Camera License
CAM15000	15,000 Camera License

Version 1.1 © Copyright NetVu Limited. 02/07/2020. Design and specification subject to change without notice. E. and O.E. VMS/DAT/001/B